

TBS Council Connection October 2009

A Message from your National President

Dear Members of Tau Beta Sigma,

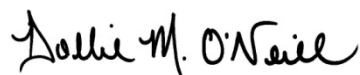
Greetings from Tau Beta Sigma National Council! We would like to reach out through our *Council Connection* to keep you updated & informed of the status of Tau Beta Sigma on the National level. We started our 2009-2011 biennium with our National Convention this past July in Phoenix, Arizona with an excellent National Intercollegiate Band and big changes in the sorority.

This convention, we increased the amount of Tau Beta Sigma members in the 2009 National Intercollegiate Band (NIB). One factor for this increased membership was that one of our District Councils hosted auditions for the NIB at their District Convention. The students organized audition logistics and then sent in the audition tapes to our National Headquarters. If you are looking for a new service project in the next year or two, feel free to share this idea for the next NIB. This year our students got to learn first-hand from Conductor Colonel John R. Bourgeois, Director Emeritus of The President's Own, the United States Marine Band and Composer, Mark Camphouse, George Mason University. The 2011 NIB students are in store for a great treat and at our 2011 Convention will be held in Colorado Springs, Colorado.

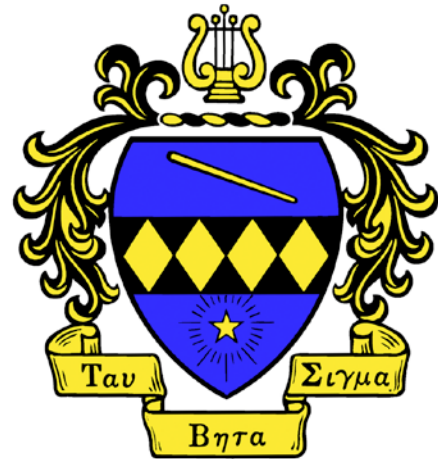
Some of our "Hot Topics" for this year are those of a serious note. Tau Beta Sigma's insurance carrier, whom we share jointly with our brother organization Kappa Kappa Psi, dropped their service for us due to the increase of hazing & liability claims filed on our organizations. We therefore recently signed on with a new insurance carrier. However the increase of costs with insurance carrier has resulted in higher membership dues for our organization(s). I share this with you to inform you and to help us keep our students educated. We are educating our members and being proactive as an organization to educate and inform our members of the liability of hazing on a larger scale and how this affects us as a whole, not just monetarily, but our existence. Take a Stand For Tau Beta Sigma!

On another note, Tau Beta Sigma is growing! We have 8 colonies and just installed two new chapters at the University of Memphis and Eastern Carolina University! We are honored to be selected to serve on your campus and excited to continue the outreach towards other campuses as we go. Best wishes for another successful year in music and serving college bands.

Tau Beta Sigma For Greater Bands,



Tau Beta Sigma, National President



2009-2011 National Council

Dollie M. O'Neill,
National President
dolliemcdonald@tbsigma.org

Dawn Farmer,
*National Vice President for
Colonization & Membership*
dawn@tbsigma.org

Dr. Kathryn Garrett Kelly, MD,
*National Vice President
for Special Projects*
HPIC98@aol.com

Dr. Joan DeAlbuquerque,
*National Vice President for
Professional Relations*
jdealbuq@csulb.edu

Nicole C. Burdick
*National Vice President for
Communication & Recognition*
canada@tbsigma.org



What is the Council Connection?

During the 1995-1997 biennium, the *Council Connection* was developed as a special newsletter in order to communicate more regularly with district leaders. During the 2007-2009 biennium the newsletter was revamped and published twice. Your 2009 - 2011 National Council has decided to revive this publication, and make it available to all members of Tau Beta Sigma!

We are very happy to share updates with our national membership. Please take the time to read and share it with your entire chapter. The Council Connection will be sent to you by the National Council four times a year. Look for your next newsletter in January!

From the Desk of your National Vice President for Colonization & Membership

Greetings, Sisters!

There are three pieces of information that I would like to share with you.

1. The Guide to Membership Education has been updated for this biennium and is available on the Tau Beta Sigma website. New additions include an updated Alcohol Policy, Third Party Vendor Policy, and music for our newest song, The Affirmation.

2. Recently installed new chapters include:
The University of Memphis
East Carolina University

3. And more installations are on the horizon with the following colonies currently operating for the Sorority:
Elon University
Texas College
Benedict College
Huntingdon College
South Dakota State University
Lincoln University
Spelman College
Bowie State University

This is a remarkable time for growth within the Sorority. Thank you to all of the Sisters who serve as colony advisors, advising chapters, and visitors to colonies. Let's keep Tau Beta Sigma growing! Spread the word and help us help TBS grow!

In the bond,
Dawn

Risk Management Committee

The 2009 National Delegation unanimously approved the new Risk Management Policy, which has redefined our Hazing Policy and Alcohol & Controlled Substances Policies (for more information see the policies on our website:<http://www.tbsigma.org/policies.html>). In order to be more proactive in serving our members, the Risk Management Task Force has been formed to help educate students on Hazing and Liability Issues.

Members of the committee include:

- Kianna Marzett, Life Member, Eta Delta Chapter, Chair
- JP Wilson, Director of Bands, Southern Arkansas University
- Ryan Minster, Sponsor & Life Member, Gamma Omega Chapter
- Chris Foster, Life Member, Tau Chapter
- Kathy Godwin, Past National President, Life Member, Omega Chapter



'Melody,
harmony,
and FUN!'

National Projects Update from your National Vice President for Special Projects

Greetings Sisters and Brothers of Tau Beta Sigma!

There are many great programs on a National level and I hope you all continue to stay involved. Currently, we are in the process of developing a new program and I am very excited in anticipation of announcing this wonderful endeavor to the membership in the near future. Our current programs are also in full swing.

TBS Mentoring Program

The Mentoring Program was developed in conjunction with Women Band Directors International (WBDI), and is designed to pair students and new teachers with practicing band directors. The deadline for submission for the first round of pairing is October 31, 2009. Please send your name, address, phone number, email address, and area of study/interest to me ASAP!

History and Archives Committee

This committee had its first meeting of the Biennium led by Ms. Lisa Croston. They are continuing to catalog the history of our Sorority and its members.

Women in Music Speakers

Every year during our District Conventions we choose Women in Music to speak and share their experiences. This year is no different! If you have any suggestions of dynamic speakers that you would like to see at your Convention please send me their names and contact information by November 15, 2009.

Membership Database Entry Donation Drive

As we move into the new biennium, the Sorority strives to increase the use of technology for record keeping and historical preservation. Our current endeavor involves entering all of our membership information since our founding into a central database that will give the roster permanence and increased organization. **But we need your help!** Each chapter is being asked to contribute to the entry of their chapter's membership roster into the central database by making a \$30 donation to the National Chapter. Through your donation we will be able to preserve and protect the history of our Sorority. Your donation will also help Tau Beta Sigma in the realization of our goal to move towards a web-based system that was approved at this year's National Convention in the very near future as this data will already be electronic. Please make your donation by March 31, 2010!

Serving your band is the most important program of all and if you need any help with developing programs that help your band program or your community please feel free to contact me at your earliest convenience. Additionally, I am always open to suggestions on how I can be of best help to you, the membership.

Tau Beta Sigma for Greater Bands!!!
ITB,
Kathryn Garrett Kelly, MD



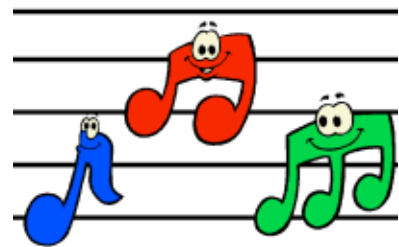
New Counselors

Due to the election of Kathryn Kelly to the National Council and Chris Gordon to the Board of Trustees, the National Council had the opportunity to fill 2 open Counselor positions. After reviewing several applications the National Council is pleased to announce the appointment of:

Tom Franklin,
NED Counselor
Life Member, Gamma Kappa
franklintbs@yahoo.com

and

Erika Pope,
SWD Counselor
Life Member, Theta Theta
erikapope@ymail.com



MEP Collection Guide 2009-2010

The National Council of Tau Beta Sigma is requesting that all Active Chapters submit an electronic copy of their Membership Education Program. These documents can be used for multiple reasons after their collection, and it is important that each chapter complies with this request. With the absence of the National Chapter Field Representative, this task is no longer handled by a single person acting on behalf of the National Council. Until the CFR is reinstated, we must rely on each chapter to be proactive in this collection process.

Every Active Chapter must submit an electronic copy of their Membership Education Program to their district Counselor/s with a copy of their Fall Activity Report, due December 1, 2009.

Your chapter's MEP should include an outline of the materials taught to your membership classes and any activities or trips planned which include membership candidates.

If you have not reviewed or updated your chapter's Membership Education Program, this may be a good time to do so. Ensure that the material being covered matches the suggestions in the National Guide to Membership Education. Also make sure to update the materials to include the new polices regarding alcohol, third party vendors, and hazing. All of these materials can be found on the Tau Beta Sigma website (www.tbsigma.org).

This collection of MEP documents will help us with many issues including selecting chapters to serve as Colony Advisors, providing newer chapters with ideas and timelines for membership education, and reviewing current activities of our chapters. If you ever, at any time, have any questions about the content or activities in your membership education program, please ask someone. Your district officers, counselors, risk management committee members, Board of Trustees members, and national officers want nothing than to ensure that **all chapters** of Tau Beta Sigma are practicing thorough, safe membership education plans. Asking questions will allow us to help your chapter, not fault it.

Please submit your chapter's MEP to your counselor/s no later than 12/1/2009.

We appreciate your support in the growth and strength of Tau Beta Sigma.

In the Bond,

Dawn Farmer
National Vice President for Colonization & Membership
On behalf of the National Council of Tau Beta Sigma

*'...with my Sisters,
I am best'*



Colony Installations!

The National Council is happy to announce the installation of the following chapters:

University of Memphis – Iota Mu
Installed on September 27th by
Kelly Eidson, Board of Trustees
Vice Chair

East Carolina University – Iota Nu
Installed on October 10th by Dawn
Farmer, NVPCM



Information Update from your National Vice President for Communication & Recognition

Your National Council has been busy updating your National Handbooks! As of October 19th the Tau Beta Sigma National Convention Separate Minutes, Guide to Membership Education, and the Chapter Operations Handbook have been updated and posted to the TBS National Website (<http://www.tbsigma.org/resources.html>). Please discard old copies of the GME and Chapter Operations Handbook, as they no longer contain current information.

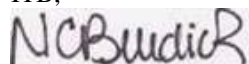
In addition to the updated minutes and handbooks, the TBS National Website is getting a facelift. Our new KKΨ/TBS National Publications Manager, Steve Nelson, is working to update the TBS National Website with suggestions requested by the 2009 National Convention Publications Committee and the National Council. There is a link on the main homepage that lists the recent updates to the website. Be sure to check back periodically to see the updates.

Need other ways to stay informed about what is going on at the National, District, and chapter levels? Join our National (<http://www.kkytbs.org/listserves/>) and District Listserves! If you're savvy as Facebooking, you can also join National and District Facebook groups.

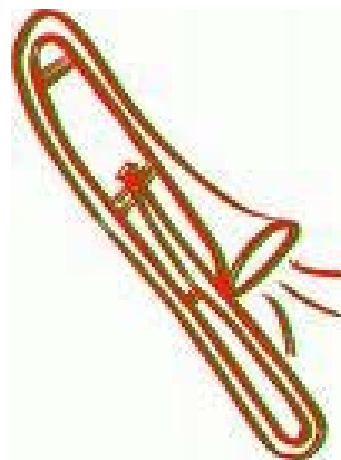
Lastly, TBS Student chats have taken place the past two months. This is a great opportunity for you to get updates from, and ask questions to the National Council. It also gives you the opportunity to ask and share information with your fellow Sisters and Brothers. Each month's chat has a theme, but general questions are more than welcome. Join the party and log onto the chats by following the directions at <http://www.tbsigma.org/chat.html>.

If you have any questions, please don't hesitate to contact your National Council!

ITB,



Nicole C. Burdick



Upcoming Events & Deadlines

Nov 20th-22nd – National Council Strategic Planning Session, Dallas, TX

Nov 23rd–TBS Student Chat, 8pm Central Standard Time

Dec 1st – Fall Activity Reports Due (<http://www.kkytbs.org/forms/TBS-FAR-2008.pdf>)

Dec 1st – National Awards Deadline for the Paula Crider Award, the Service Certificate, and the Baton.

For more information see the Chapter Operations Handbook

Dec 15th-16th – Midwest Band & Orchestra Clinic, Chicago, IL
If you are attending please stop by the KKΨ/TBS booth!

Dec 21st – TBS Student Chat, 8pm Central Standard Time

Jan 26th – TBS Student Chat, 8pm Central Standard Time

Feb 11th-13th – Texas Music Educators Association (TMEA), San Antonio, TX
If you are attending please stop by the KKΨ/TBS booth!

Tau Beta Sigma for Greater Bands!